

The sitting shower is recommended for the following persons :

- Those of different ages wishing to enjoy a shower atmosphere
- Those paying high attention to health and beauty care, and annoyed at body cooling
- Those who are annoyed with cold shower rooms
- The elderly suffering from waist and leg diseases

Considerate and elaborative design. Grandparents are so happy.



- Easy to clean down to your toes while being seated
- Foggy and vaporous shower, making cold washing rooms warm and comfortable in the winter



Enjoy relaxing and comfortable shower to reward the hardworking body



- A shower after exercise puts you in high spirits
- Wash off your sweat, filling you full of energy



Also considerate of your baby



- After showering, you feel almost the same warmth as that of a bubble bath, and fully make your body warm while relaxing yourself
- Give your baby a sitting shower, accompanied by you, while communicating with your baby during the shower



Comfortable

Be seated to enjoy your shower at ease. When showering, your body is surrounded by a thin spray, making you feel warm and relaxed.



Short time

Lift up the hand rails for a quick shower. Fix them at your favorable position for relaxed washing.



Panasonic

THE SHOWER

Seated style bathing

Specifications Both right and left hand-held shower can be selected.

Connection	Piping Interface	External thread screw G1/2 (water valve interface)	Basic Performance	Water Flow	Rod shower/waist nozzle	9.0L/min (100kPa/hr.)
	Scope of Pressure	100 - 600kPa (0.1 - 0.6MPa)			Hand-held shower	7.4L/min (100kPa/hr.)
	Pressure proof Performance	1.75Mpa for 1 min.			Top spray shower (optional)	6.0L/min (100kPa/hr.)
Weight	About 18kg	Material	Temperature Adjustment Performance	Safety button Stop position	Water temperature : about 40°C	
Temperature Adjustment Handle	(Cold water about -47°C)			Function of preventing hot water from flowing out	Water temperature : lower than 47°C	
Shower Switching Handle	Rod shower / hand-held shower / stop and water flow adjustment			High temperature stop valve	Running only after the water temperature is up to about 52°C	
Operation	Switching Button	Only used when top-spray shower is available	Installation Space	Seat, Cover and Nozzle	Resin	
	Hand-held Shower	Height adjustment : vertical and downwards (when folded) – upwards 160° Direction adjustment : bottom – internal 90° Nozzle direction adjustment : 6 (both ends of the rod, and waist nozzle)		Rod Shower	Metal	
				Hand-held Shower	Resin	
	Seat	Adjustable and folded	Top Spray Shower (optional)	Metal		
Power	No need to use	Safety Device	Temperature sensor to prevent hot water from flowing out	Valid Space	W800 x D1000 x H1870 + (mm) # w/o top spray W800 x D1000 x H2215 + (mm) # w top spray	

No. of Standard Applicable for the Product : QB2806-2006

Before installation, please confirm the water pressure

		Scope of Pressure			
		< 100kPa	100-300kPa	300-600kPa	> 600kPa
Cold water pressure	Cold water pressure must be bigger than hot water pressure	Cold water pressure increasing valve must be installed	—	Use of pressure reducing valve recommended	Pressure reducing valve installed
Hot water pressure		Hot water pressure increasing valve must be installed	—	Use of pressure reducing valve recommended	Pressure reducing valve installed

**Valid Space :
W800 x H1870 x D100mm above**

Installation precautions:

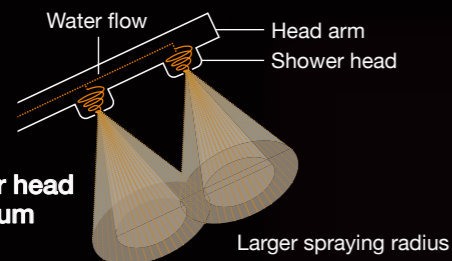
In case of wall installation, the wall must be made of concrete or solid bricks.

Customers shall bear the liabilities for subsequent problems caused by any factors other than the above.



Wash your body with 10 shower heads.

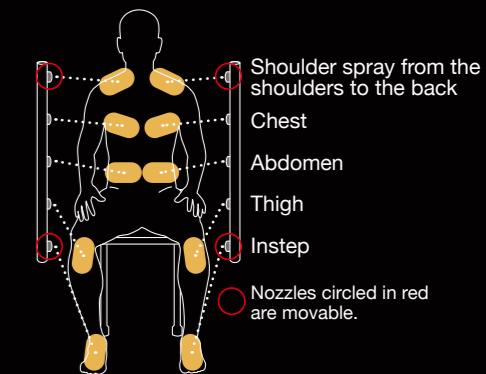
The head arm and shower heads are subtly designed. The spray covers the whole body to make the body warm. Adjusting the temperature is convenient, and switching to a cold water shower is quick. Alternating cold and hot water showers is suggested.



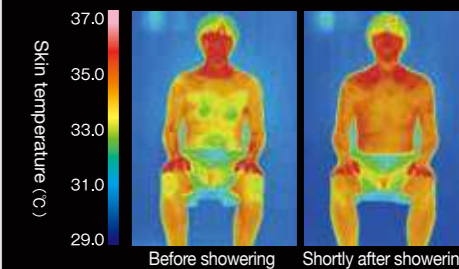
Water flow in the shower head rotates to realize maximum even spraying.



Nozzle direction

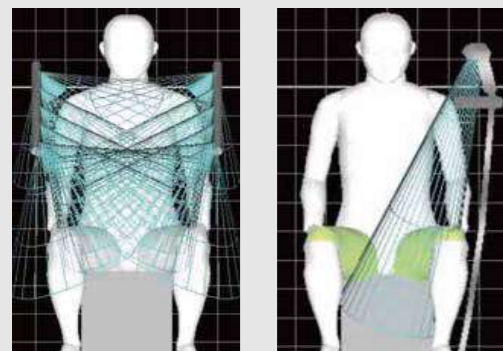


When showering, the whole body is surrounded by spray, making the whole body warm.



[Test Method]
Method: The IR temperature meter is used to test the skin surface temperature before showering and shortly after showering with THE SHOWER. (Hot Water Temperature: THE SHOWER - about 42°C, showering for 5min. With a dynamic water pressure of 0.1Mpa, the flow is about 9L/min.)

Showering Schematic Diagram

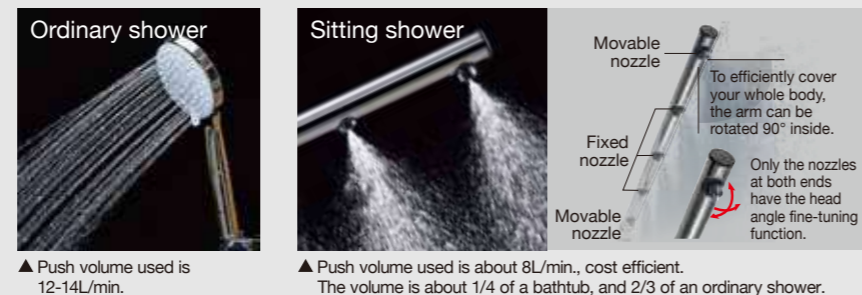


▲ 12 newly developed new nozzles spray finely and evenly to cover your whole body.

▲ Conventional showering effects.

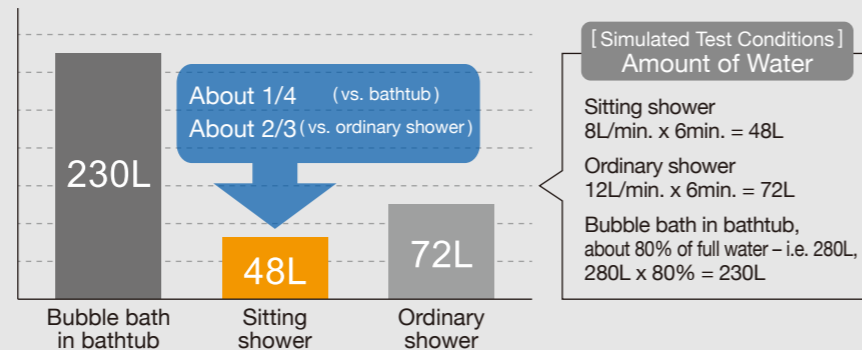
Fine spraying covers the whole skin surface, so it is difficult to form a boundary layer and easy to transfer heat. High temperature and high humidity air is absorbed to make your body warm. Japanese users reported a large improvement of sleep quality after showering.

Water saving for full showering at ease



▲ Push volume used is 12-14L/min.

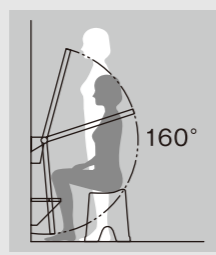
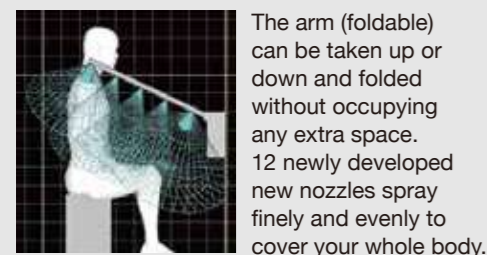
▲ Push volume used is about 8L/min., cost efficient. The volume is about 1/4 of a bathtub, and 2/3 of an ordinary shower.



Example of Flexible Use of Spray Water

Time	Content	Method (based on time and temperature)	Purpose
Before exercise	Whole Body Warm water shower	Hot Water (42°C) ⌚ 2-3min.	① Make your body warm with warm water for a warm-up. ② Relax
Shortly after exercise	Part Alternative cold and hot water showers (desirable part)	Hot Water (42°C) ⌚ 3-5min. 3-4 cycles	① Cold water shower may replace icy water spraying. ② Prevent non-sensitivity to temperature, and keep irritant.
	Whole Body Cold water shower Cooled	Cold water ⌚ 1-2 min.	Recover hot body to normal conditions. (mainly in summer)
Healthcare after exercise	Whole Body Alternative cold and hot water showers	Warm (38-42°C) A temperature that will not cause red skin ⌚ 2-3min. 4-5 cycles Cold water best below 20°C ⌚ 1-2 min. Ending with a cold water shower	Repeat using warm and cold water for irritation, helping the whole body for adjustment and recovery.

Advantages of THE SHOWER



The foggy spraying can wrap the body for washing. The arms can sway up to 160°. The left and right arms can be rotated respectively. The position may be adjusted as you wish.



Waist spraying gives you all-round shower care. Sit comfortably to enjoy a warm shower almost like that in the bathtub.